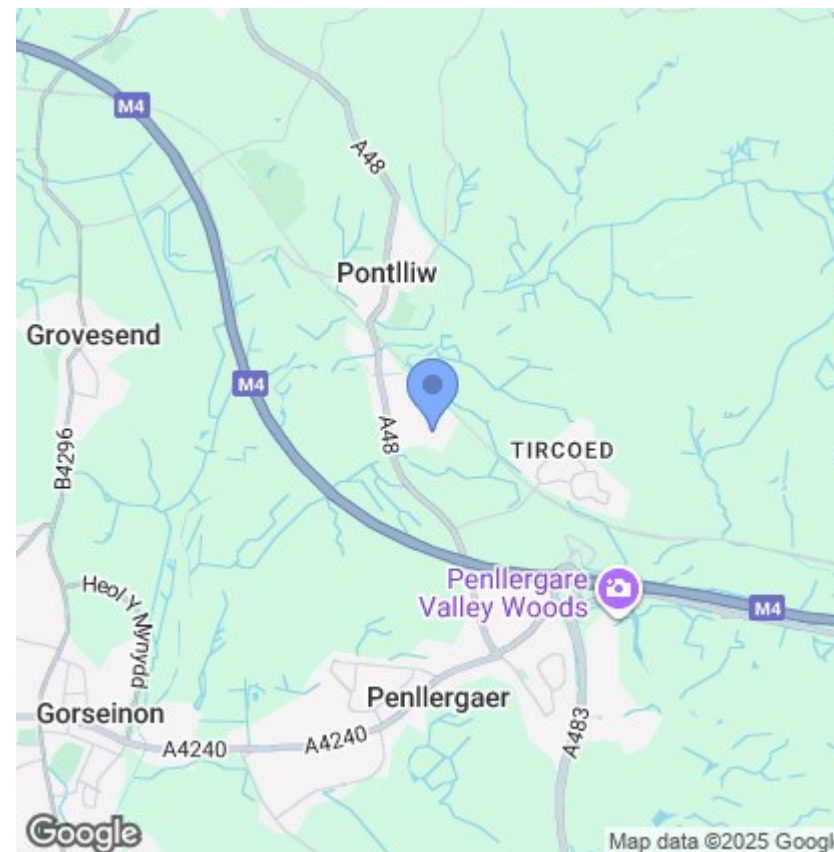
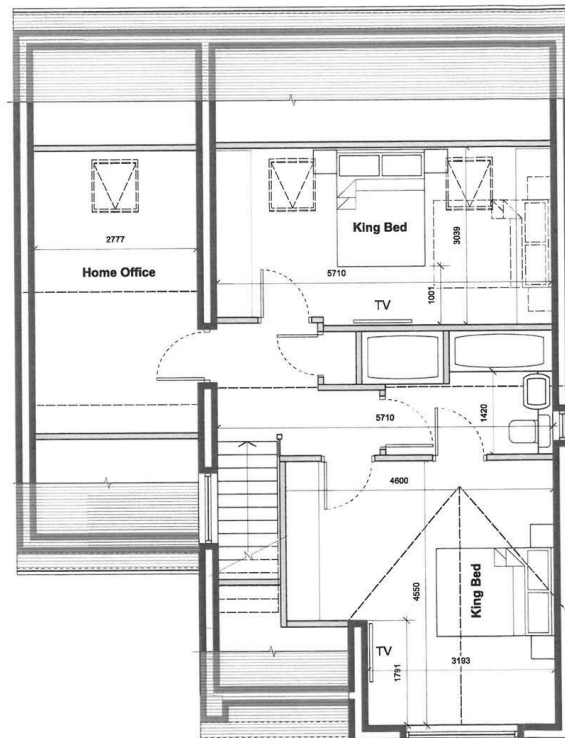
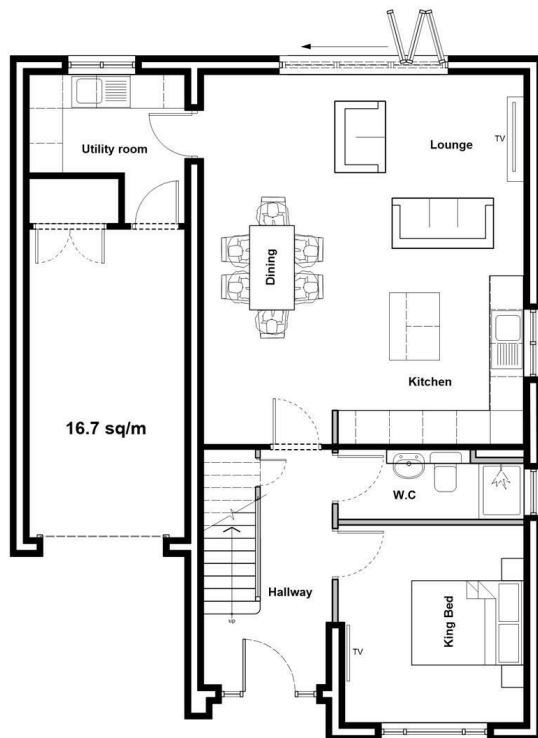




Plot 2 Christopher Rise (No 2 Clos William), Pontlliw, Swansea, SA4 9EN

Prices From £395,000

- OFF-PLAN RESERVATION NOW AVAILABLE
- GARAGE
- EPC-B
- DIFFERING STYLES AVAILABLE
- OUTSTANDING QUALITY
- VERSATILE ACCOMODATION OVER TWO LEVELS
- SOUGHT-AFTER LOCATION



Description

We are pleased to announce the release of this long-awaited development which is adjoining the well-known Cadwr listed, historic 'Poplars' and will eventually form part of the unique 'Poplars Development'

PLEASE NOTE, IMAGE SHOWS CURRENT BUILD STAGE OF PLOT 2 AND CGI OF FINISHED KITCHEN

Plot 2 is now RESERVED with choice of styles, each detached Available

ADDITIONAL INFORMATION

The Vendor advises a Japanese Knotweed eradication programme is in place.

Directions

POSTCODE FOR SATNAV: SA4 9EN

Viewings

Viewings by arrangement only.

Call 01792 653100 to make an appointment.